
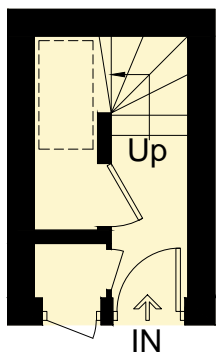


# Eton Garages, NW3

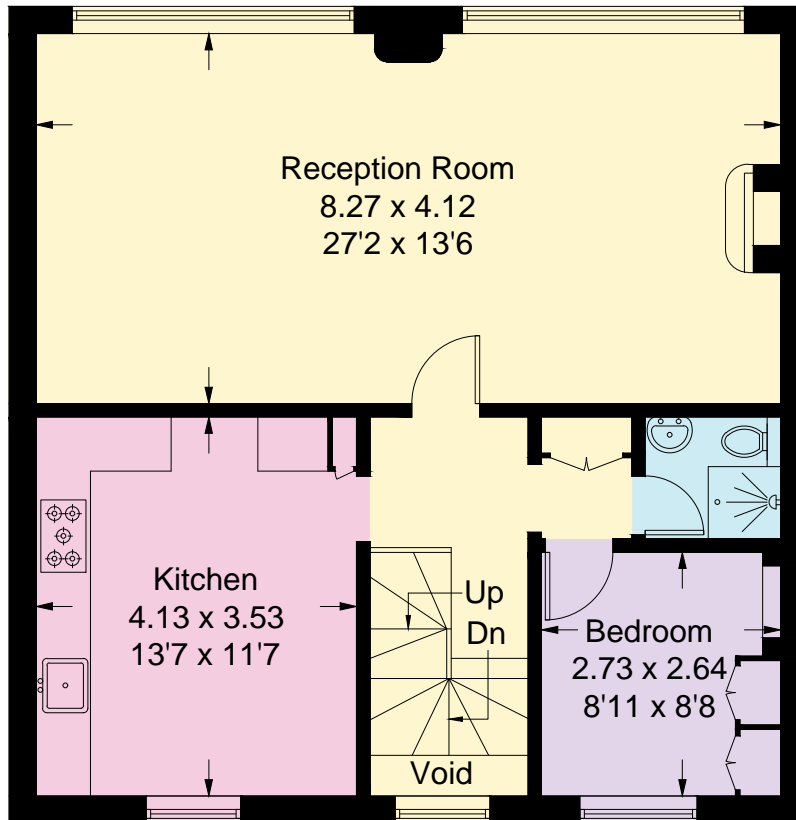
Approximate Gross Internal Area = 120.2 sq m / 1294 sq ft  
(Excluding Reduced Headroom)  
Reduced Headroom = 5 sq m / 54 sq ft  
Total = 125.2 sq m / 1348 sq ft



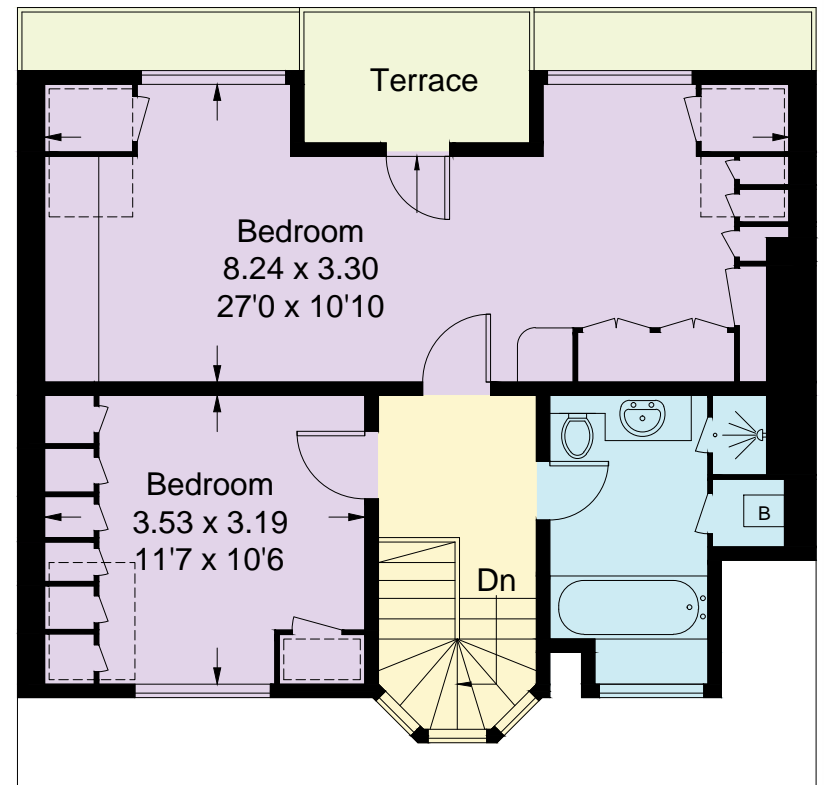
 = Reduced headroom below 1.5m / 5'0



**Ground Floor**



**First Floor**



**Second Floor**

This plan is for layout guidance only. Not drawn to scale unless stated. Windows and door openings are approximate. Whilst every care is taken in the preparation of this plan, please check all dimensions, shapes and compass bearings before making any decisions reliant upon them. (ID341705)